
**EXPLORING IN AUSTRALIA'S
DISCOVERY HOTSPOTS**

Investor Presentation

20 August 2021

ASX : DEV



Important Information

❑ **Forward Looking Statements**

This Presentation may include statements that could be deemed “forward-looking statements”. Although the Company believes the expectations expressed in such forward-looking statements are based on reasonable assumptions, such statements are not guarantees of future performance and actual results or developments may differ materially from those expected in the forward-looking statements or not take place at all.

❑ **No offer to sell or invitation to buy**

This Presentation is not, and should not be considered to, constitute any offer to sell, or solicitation of an offer to buy, any securities in DevEx Resources Limited, and no part of this Presentation forms the basis of any contract or commitment whatsoever with any person. DevEx Resources Limited does not accept any liability to any person in relation to the distribution or possession of this Presentation from or in any jurisdiction.

❑ **Disclaimer**

Whilst care has been exercised in preparing and presenting this Presentation, to the maximum extent permitted by law, DevEx Resources Limited and its representatives:

- make no representation, warranty or undertaking, express or implied, as to the adequacy, accuracy, completeness or reasonableness of this Presentation;
- accept no responsibility or liability as to the adequacy, accuracy, completeness or reasonableness of this Presentation; and
- accept no responsibility for any errors or omissions from this Presentation.

❑ **Competent Person Statement**

The information in this Presentation that relates to Exploration Results for the Sovereign Project are extracted from the ASX announcement titled “Large-scale, 12km long mafic-ultramafic intrusion at Sovereign Project, paving way for ground EM and initial diamond drilling” released on 17th August 2021, “Drilling confirms anomalous palladium, platinum and copper associated with a mafic-ultramafic intrusion at the Sovereign Project, WA” release on 27th April 2021 which is available on www.devexresources.com.au.

The information in this Presentation that relates to Exploration Results for the Wilga Downs Project is extracted from the ASX announcement titled “Strong Off-Hole DHEM Conductor at Wilga Downs Copper-Gold Project, NSW” released on 20th April 2021, “Encouraging initial drill results at Wilga Downs Project” released on 4th February 2021 and “Devex expands NSW portfolio with farm-in on highly prospective gold-base metal project in Cobar Basin” released on 16th September 2020, all of which are available on www.devexresources.com.au.

The information in this Presentation that relates to Exploration Results for the Junee Project are extracted from the ASX announcement titled “New results significantly upgrade Junee Porphyry Copper-Gold Project, NSW” released on 26th July 2021, “Encouraging gold-copper assays from maiden air-core drilling into large-scale target at Junee Project, NSW” released on 26th May 2021, “Extensive copper-gold soil anomaly strengthens potential for large-scale porphyry copper-gold system at Junee” released on 9th February 2021, “NSW Exploration Update – Basin Creek Gold Project and Junee Copper-Gold Project” release on 6th November 2020, “Geophysics upgrades priority drill targets at Junee Copper-Gold Project, NSW, as new drill programme commences” released on 3rd March 2020, and “DevEx Further Expands Potential of Junee Copper-Gold Project, NSW with Identification of Additional Porphyry Targets” released on the 5th March 2019 and “Porphyry Copper-Gold Targets Identified at Junee Project, Lachlan Fold Belt, NSW” released on the 24th January 2018, all of which are available on www.devexresources.com.au.

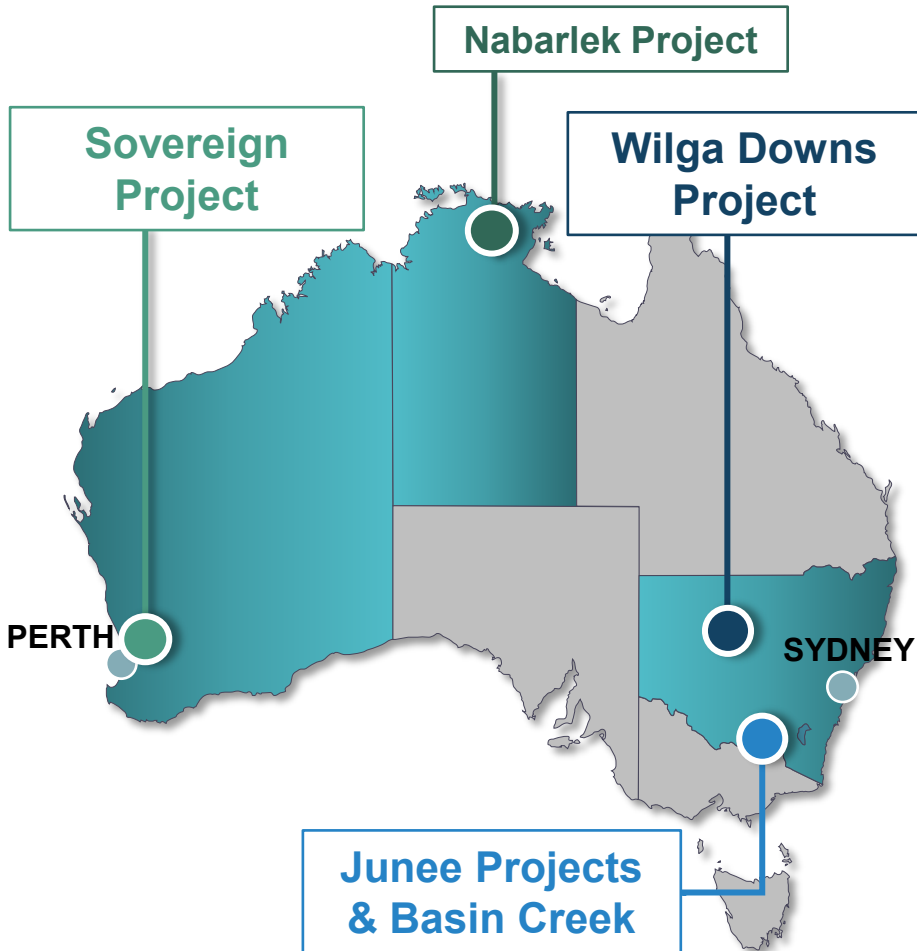
The information in this Presentation that relates to Exploration Results for the Nabarlek Project is extracted from the ASX announcement titled “Large drill target defined below Nabarlek Uranium Mine, West Arnhem Project, NT” released on 9th October 2018 and “Technical review recognises strong similarities between U40 prospect and the Coronation Hill U-Au-PGE deposit ” released on the 9th May 2019, which are available on www.devexresources.com.au.

The Company confirms that it is not aware of any new information or data that materially affects the information included in the relevant original market announcement.

❑ **Exploration by Other Explorers**

This Presentation contains information sourced from the reports of Other Explorers. References to the original reports are provided as footnotes where the information is cited in this Presentation. The Company does not vouch for the accuracy of these reports. The Company has taken the decision to include this information as it is in the public domain and has assessed it to be of relevance to shareholders and investors.

Exploring in Australia's discovery hot-spots



Julimar Complex, WA

- High-grade palladium-nickel discovery by Chalice Mining Ltd demonstrates enormous potential for the region.
- **Sovereign Project** – 12km long differentiated mafic-ultramafic intrusion consistent with upper portion of Julimar mafic-ultramafic intrusion.
- Expanded ground EM Survey and stratigraphic diamond drilling planned to commence next month.

Lachlan Fold Belt, NSW

- Expansive exploration campaigns underway in a world-class copper-gold region, ground tightly held by major miners:
 - **Wilga Downs Project (Cobar):** Diamond drilling targeting significant off-hole conductors adjacent to Cu-Au mineralisation.
 - **Junee Project:** Advancing exploration in proven copper-gold belt, host to Cadia-Ridgeway (Newcrest Mining) and Northparkes (China Molybdenum Co Ltd).
 - **Basin Creek Project:** Large gold and copper system defined in central Lachlan Fold Belt region.

Alligator Rivers Uranium Province, NT

- **Nabarlek Project** – Exploring for high-grade uranium, and copper-gold surrounding the historical Nabarlek Uranium Mine (24 Mlbs @ 1.84% U₃O₈ produced).
- Project-wide targeting exercise and field work underway of multiple uranium prospects within the Company's granted tenements.

Led by an invested and highly motivated team...



Tim Goyder
CHAIRMAN

- Mining investor with a strong track record of successful investment and value creation.
- Chairman of Chalice Mining Ltd and Liontown Resources Ltd.
- Former Director of Strike Energy Ltd.
- **DevEx's largest shareholder (~17%).**



Brendan Bradley
MANAGING DIRECTOR

- Geologist for 25+ years.
- Extensive experience in exploration and development of epithermal gold deposits.
- Highly experienced in intrusive related nickel-copper-PGE deposits.
- Senior management at Perilya Ltd, Dominion Mining Ltd and Kingsgate Consol. Ltd.

Supported by an experienced technical team and board



Bryn Jones
NON-EXECUTIVE
DIRECTOR

- Industrial Chemist with extensive experience in the uranium industry.
- Experienced in the technical evaluation, construction and operation of projects in various commodities.
- Director of Boss Energy Ltd, Director of Australian Rare Earths Ltd and MD of PhosEnergy Ltd.



Richard Hacker
NON-EXECUTIVE
DIRECTOR

- Chartered Accountant (ICAA) and Chartered Secretary.
- 20+ years corporate and commercial experience in the energy and resources sector.
- Executive for Chalice Mining Ltd.



Chris Torrey
CHIEF GEOLOGIST
NSW

- 35+ years experience.
- Extensive experience in epithermal gold and porphyry copper-gold exploration and development in the Lachlan Fold Belt and abroad.
- Former senior management with Golden Cross Resources Ltd, Silver City Minerals Ltd and Cyprus Minerals Corp.

Upside Potential: Exploring on untouched ground within proven mineral regions for maximum growth impact

Capital Structure

Shares	308M
Options	15.3M
Market Cap	\$69M (at 22.5c ²)
Cash ¹	\$16.6
Assets	PhosEnergy Limited (5.3%): 6.1M Shares

Board & Management

Tim Goyder	Chairman
Brendan Bradley	Managing Director
Bryn Jones	Non Exec. Director
Richard Hacker	Non Exec. Director
Kym Verheyen	Company Secretary

Major Shareholders

Tim Goyder (Chairman)	17.4%
Top 20	41%



¹ Current cash balance - 30 June 2021. Amounts and numbers have been rounded.

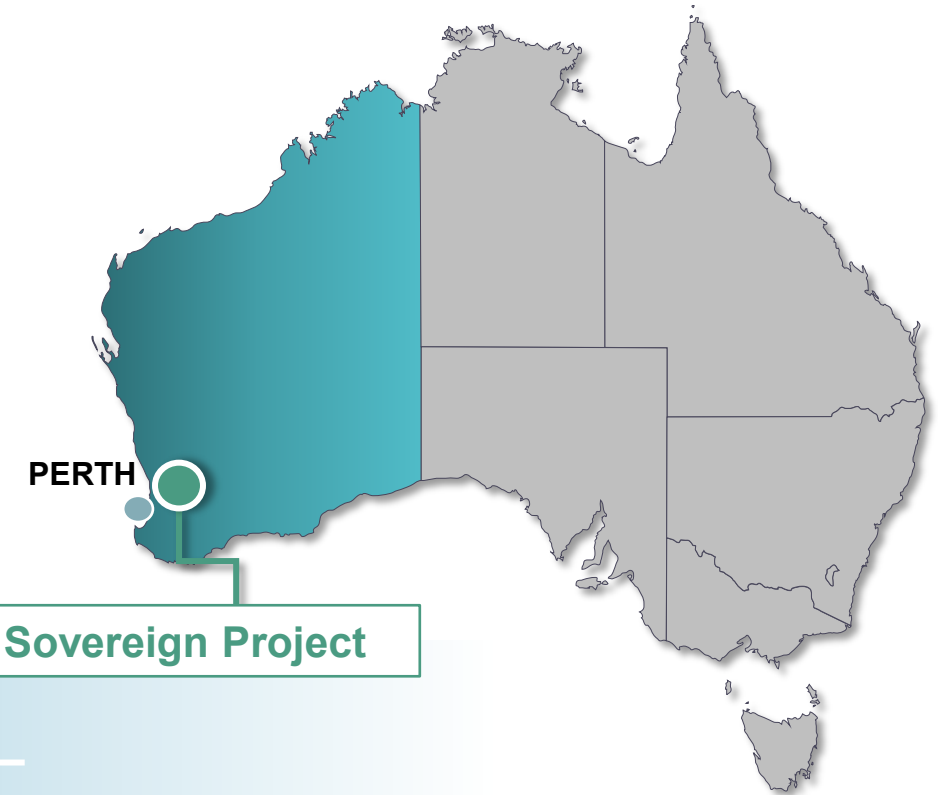
² Closing price on 18th August 2021.



Julimar Complex

Nickel-Copper-PGE

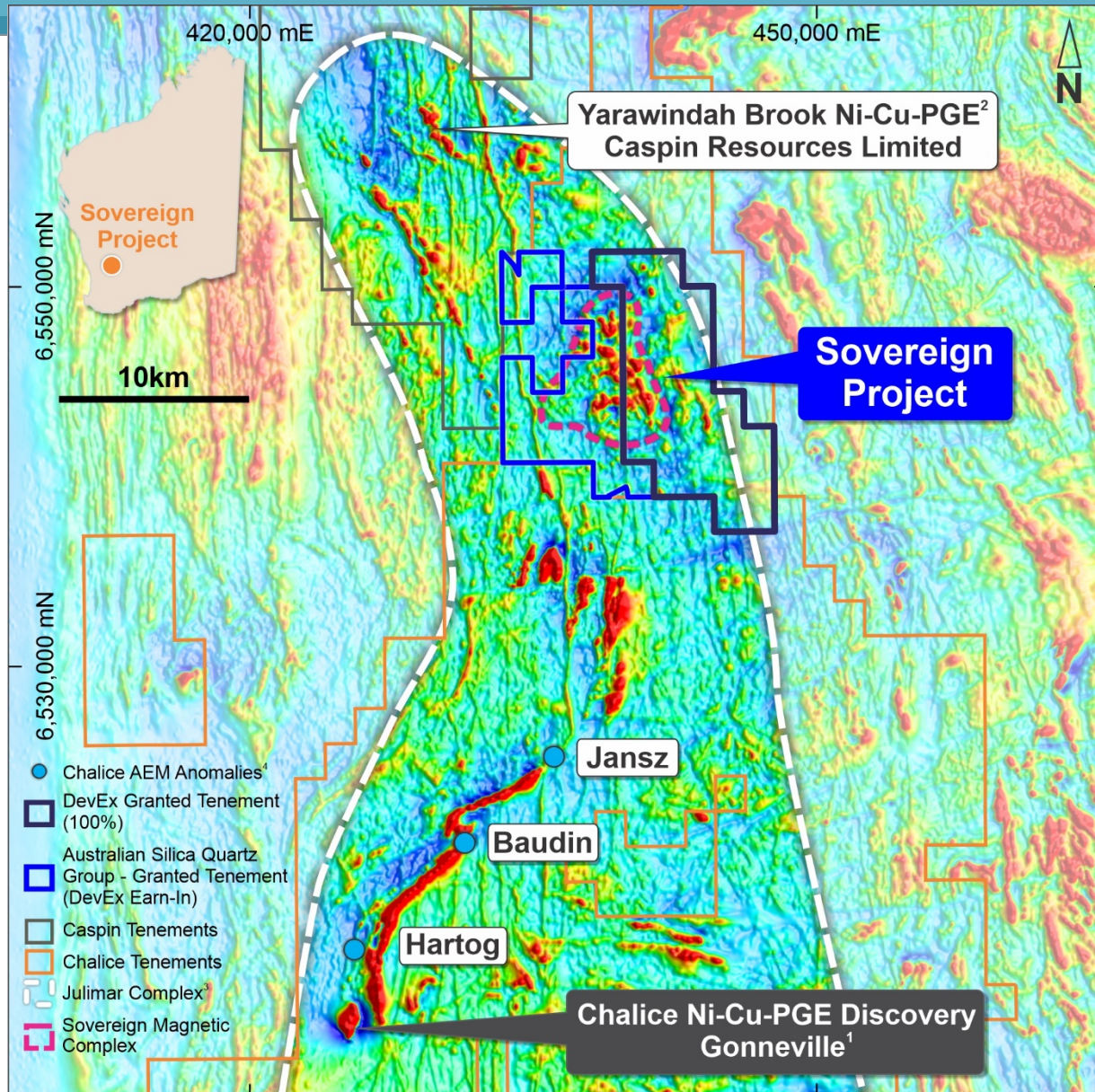
WESTERN AUSTRALIA



Developing a strategic position within a new exploration hot spot

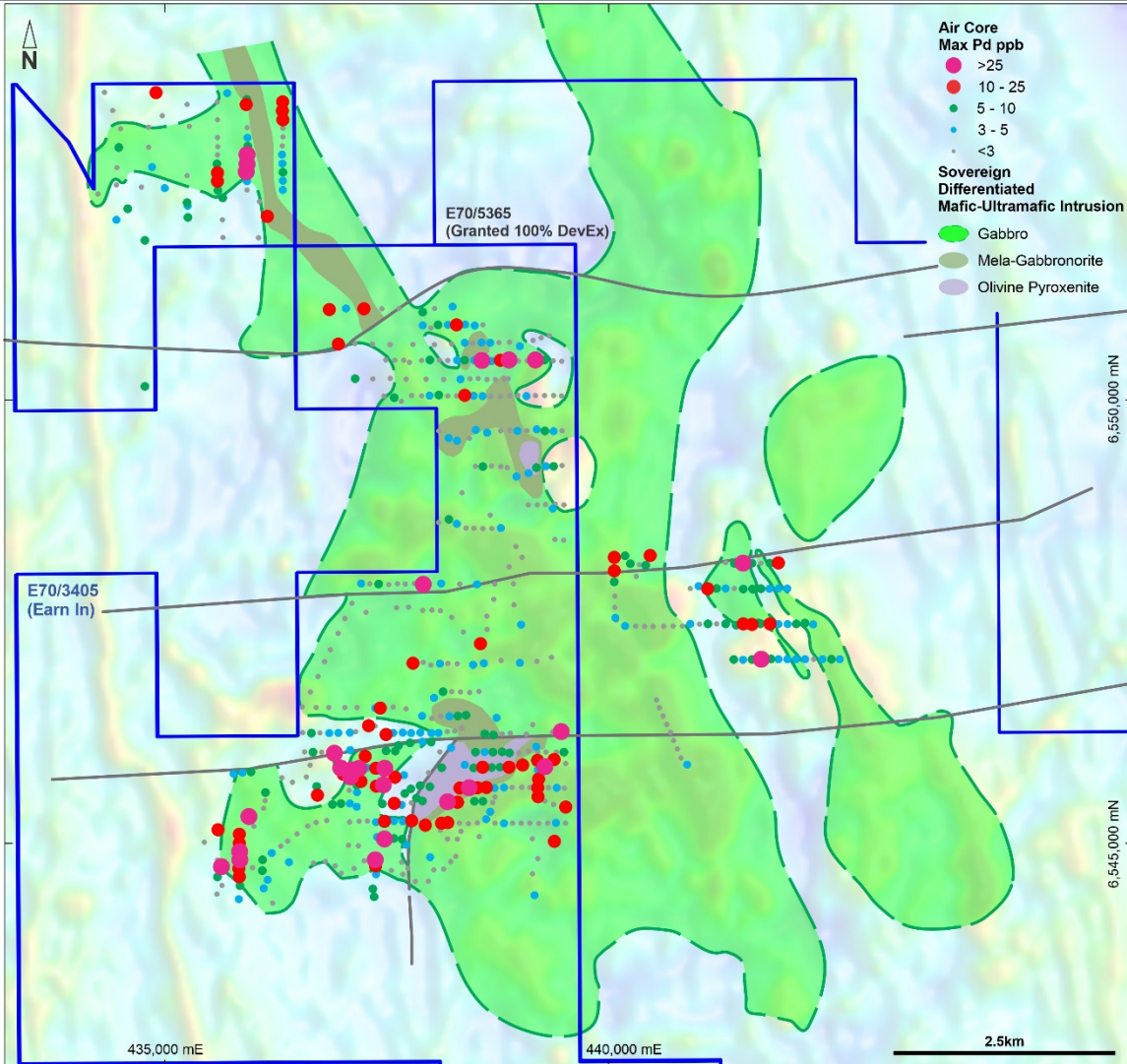
Drilling for nickel-copper-platinum group element (PGE) deposits

Julimar Complex: New ground in a new nickel-copper-PGE region



- Recent high-grade palladium and associated nickel-copper-platinum group elements (Ni-Cu-PGE) discovery by Chalice Mining Limited (ASX:CHN) has kicked off an exploration boom in the region.
- **Sovereign Project** is located between Chalice discovery and Yarawindah Brook Ni-Cu-PGE Project (Caspin Resources Limited, ASX:CPN).
- **Large 12km long Sovereign Mafic-Ultramafic Intrusion** defined with no previous Ni-Cu-PGE exploration.
- The Sovereign Project includes:
 1. *East:* (100% DEV tenure) No prior exploration within this newly granted area overlying several prospective targets.
 2. *West:* Earn-In Agreement with Australian Silica Quartz Group Ltd (ASQ), to earn 50% in the mineral and metal rights (excluding bauxite).

Sovereign Project: 12km long mafic-ultramafic intrusion indicates similar geology to the Gonneville Intrusion

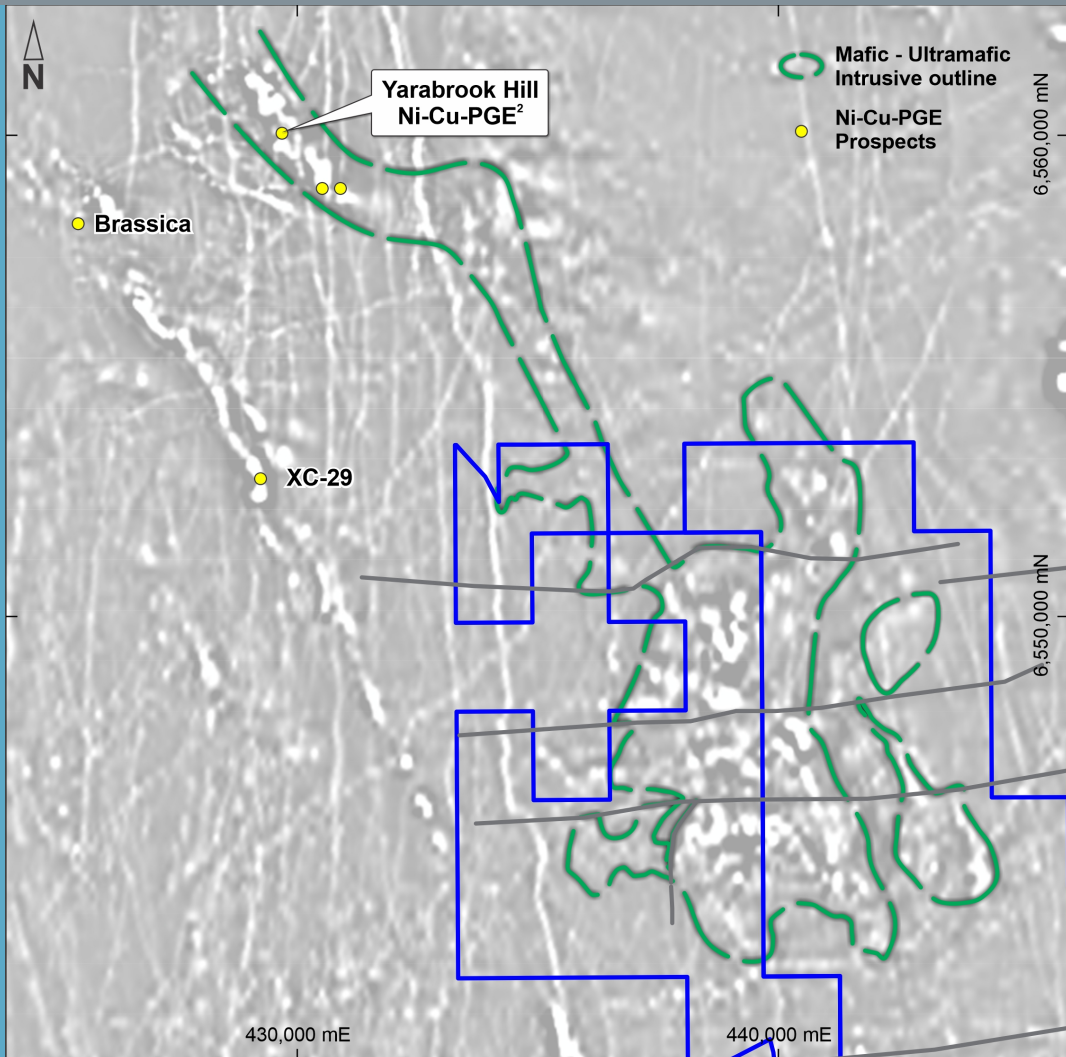


- Air-core drilling continues to define a large layered, differentiated mafic-ultramafic intrusion.
- Geology consistent with the upper portion of the Julimar mafic-ultramafic intrusion, as seen on the western edge of Chalice Mining's Gonneville Intrusion.

Next Steps:

- Extensive ground EM survey over the larger intrusion to map conductors beneath the gabbro.
- In parallel, initial **diamond drilling** planned to test the geometry and extent of the intrusion.
- Ground EM conductors will be fast tracked to drilling

Sovereign Nickel-Copper-PGE Project: Highly encouraging exploration results



Large Scale	Air-core drilling and magnetics continues to define the Sovereign Intrusion over 12km in strike	✓
Right Rocks	Range of rocks consistent with upper portions of differentiated mafic-ultramafic intrusion	✓
Right Age	Metamorphism of mafic-ultramafic rocks suggestive of Archaean age to the Sovereign Intrusion	✓
Well Positioned	Significant occurrences of Ni-Cu-PGE mineralisation discovered within mafic-ultramafic intrusions north and south of the Sovereign Intrusion at Gonneville (ASX:CHN) and Yarabrook Hill (ASX:CPN)	✓

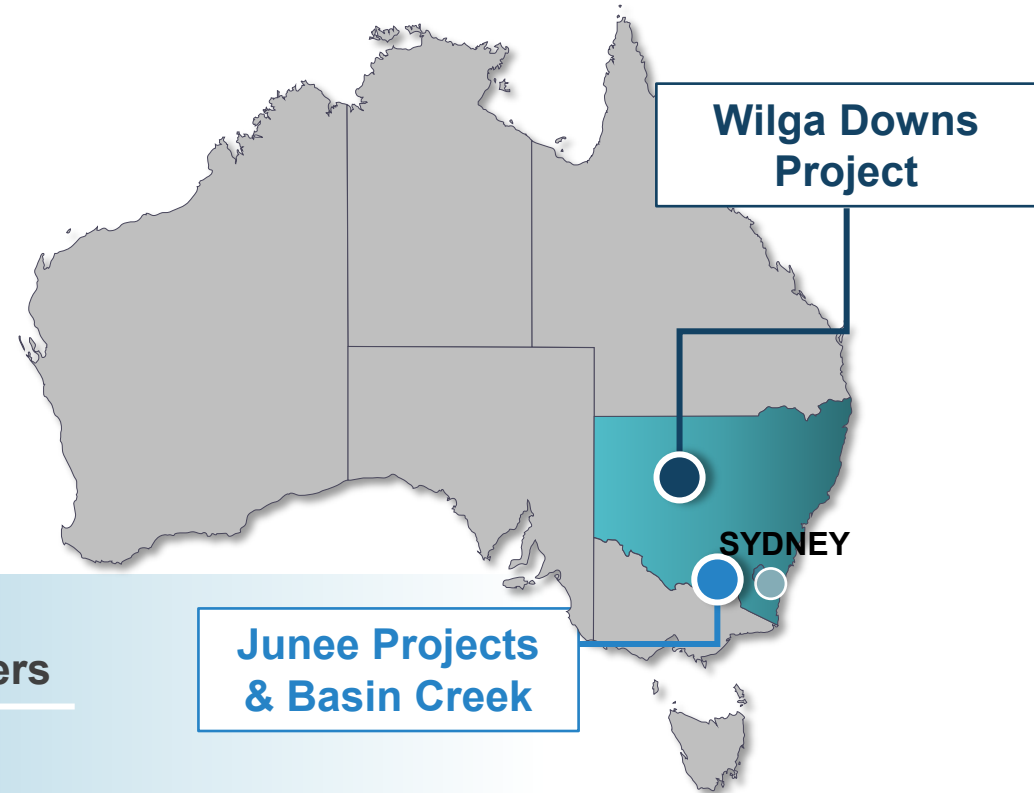


NSW Gold, Copper-Gold Portfolio

Wilga Downs Project

Junee Project

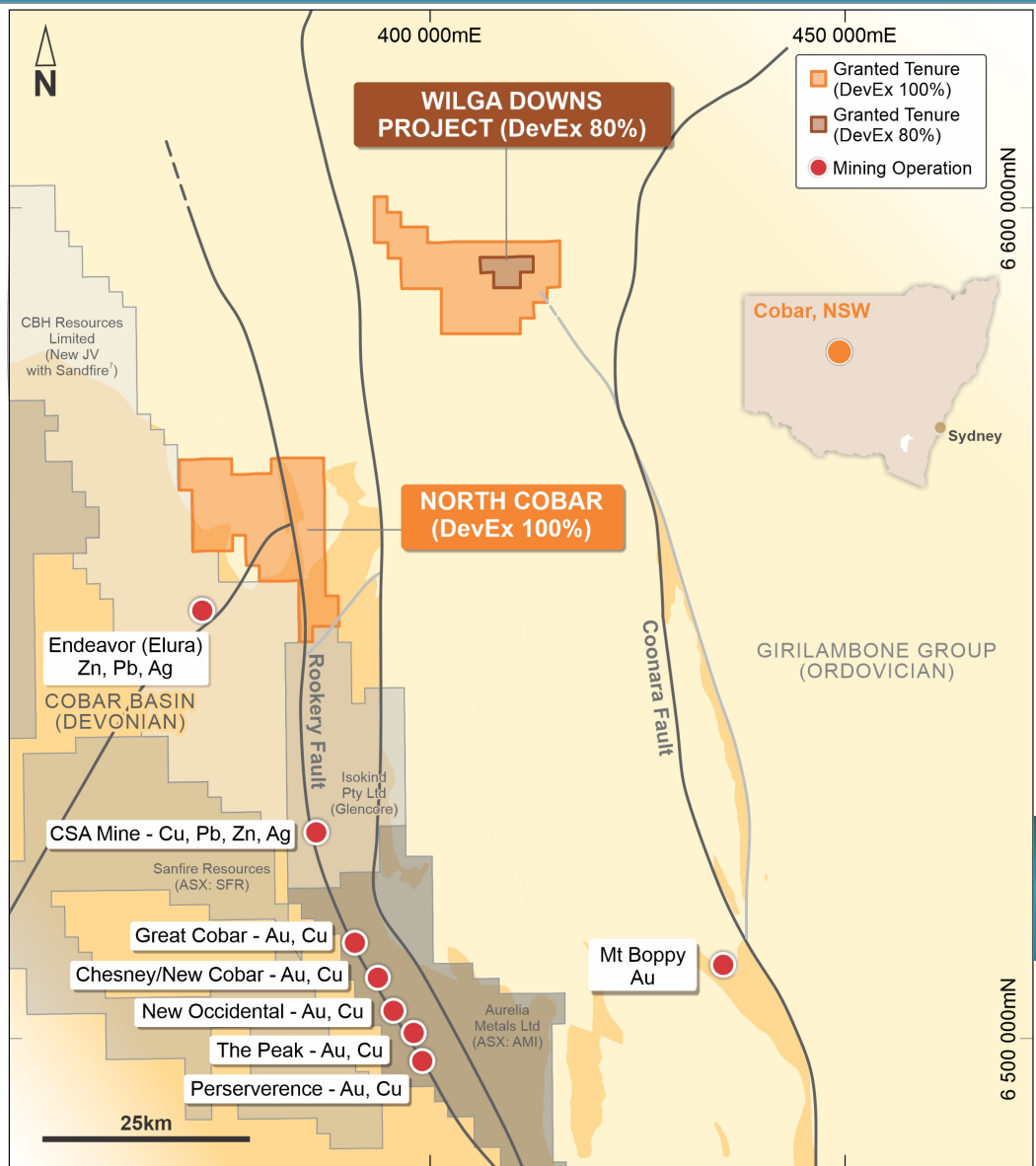
Basin Creek Project



Large scale gold and copper-gold potential, tightly held by major miners

Encouraging early drilling campaigns

Cobar Gold-Base Metal Projects: DevEx further strengthens NSW portfolio



New discovery opportunities within the highly prospective Cobar mining region, western Lachlan Fold Belt.

1. Wilga Downs Gold-Base Metal Project

- 80% Joint Venture with Thomson Resources Ltd (TMZ)
- Confirmation of Cobar type copper-gold sulphide - drilling commenced.

2. North Cobar Exploration Licence recently granted

- Plans to explore the extension and intersections of the Rookery Fault and Endeavor Fault.
- Progressing Land Access.

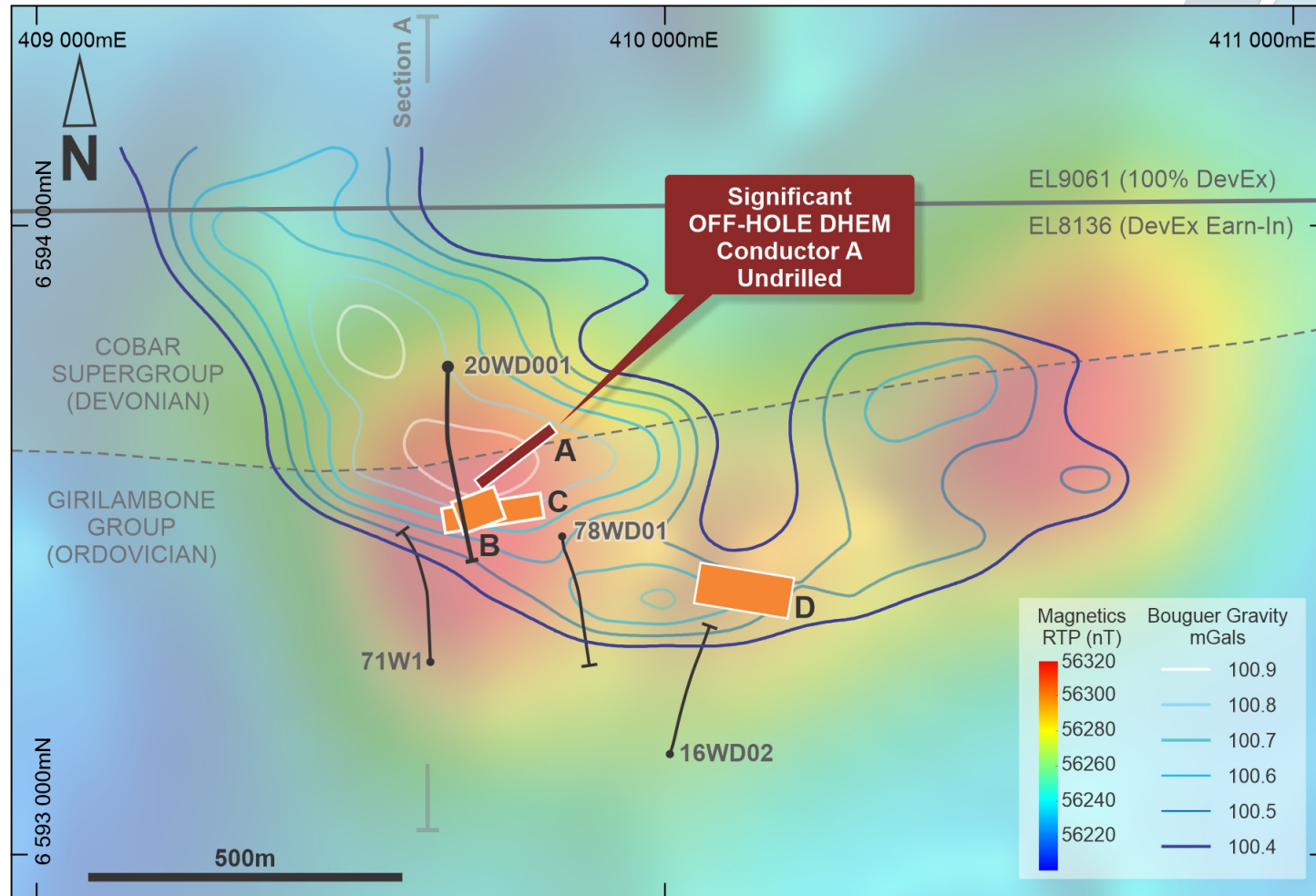
The Cobar region is host to several major, gold-polymetallic mines and active exploration ongoing;

Nearby, Sandfire Resources (SFR) major farm-in agreement with CBH Resources² for the nearby Endeavour base metal mine.

Generalised Geology Map of the central Cobar Mining District after David (2006)¹, showing location of Wilga Downs Project and Tenements. See ASX : DEV Announcement 20th April 2021 and Slide 22 for References.

Wilga Downs Project: Significant Off-Hole Conductor adjacent to mineralisation

- **Cobar type magnetic-gravity anomaly** located on the prospective fault contact between Cobar Supergroup and Girilambone Group.
- Priority target is similar to other gold-polymetallic Cobar deposits:
 - **Glencore's CSA Copper Mine**
 - **Peak and Great Cobar Copper-Gold Mines**
- DevEx's first diamond drill hole (20WD001) targeted western magnetic and gravity high.
 - Intersecting a narrow zone of semi massive pyrrhotite (magnetic sulphide) with associated copper sulphide with gold.
- **Two diamond holes have targeted both Conductors A and D with results pending.**



See ASX : DEV Announcement 20th April 2021.

Central Lachlan Fold Belt Region:

DevEx has built a sizeable (100% owned) portfolio amongst mining majors

1 A world-class gold, copper-gold Belt

Host to Cadia-Ridgeway (Newcrest Mining) and Northparkes (China Molybdenum Co Ltd) as well as several largescale gold deposits including Cowal Gold Mine (Evolution Mining Ltd) and McPhillamys Gold deposit (Regis Resources Limited).

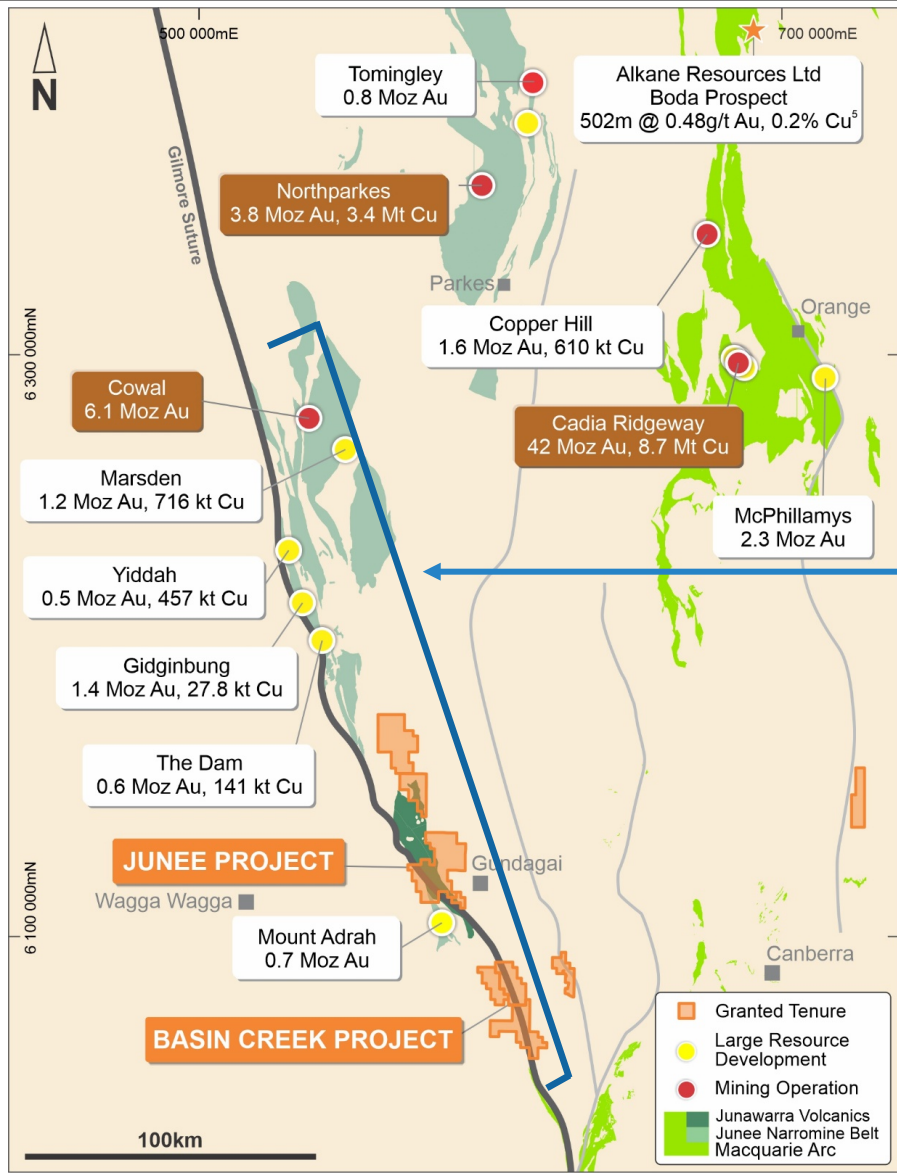
2 Major explorers within the Junee-Narromine Volcanic Belt

Newmont Goldcorp Exploration Pty Ltd | Freeport-McMoran Exploration Australia Pty Ltd
| Evolution Mining Ltd | Sandfire Resources NL | St Barbara Limited

3 DevEx – Fresh exploration on underexplored ground

- Significant rerating of the region following 2017 government mapping project² recognised rocks as the southern extension of the Junee-Narromine Belt.
- No previous drilling within a globally-recognised copper-gold region for decades.
- DevEx has built a large, well located 100%-owned ground holding:

- | **Junee Copper-Gold Project**
- | **Basin Creek Gold Project**



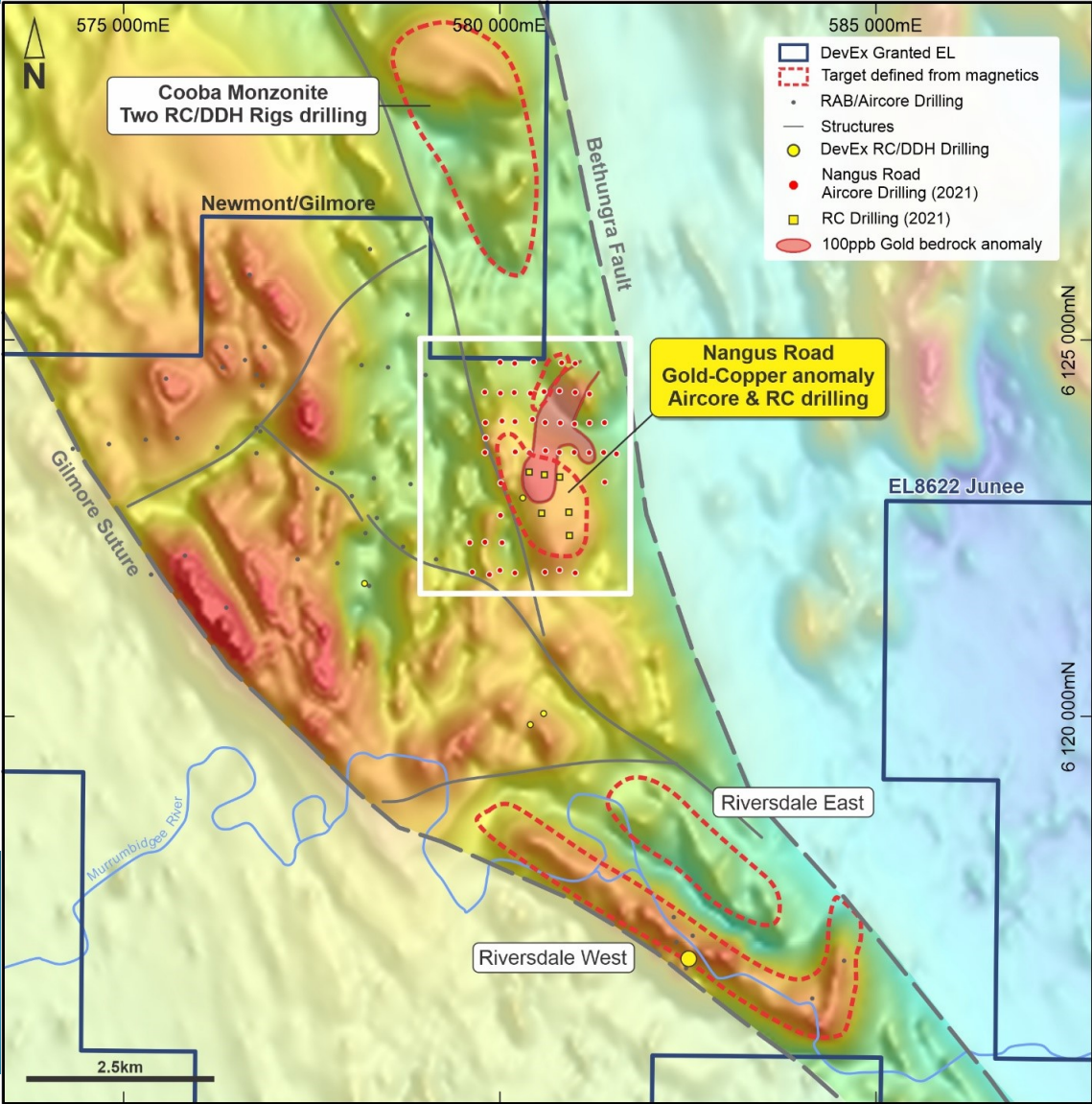
See Slide 22 for References.

Junee Project: Underexplored southern extension of the Macquarie Arc

Exploring for a “Cadia-Ridgeway type” porphyry Cu-Au mineralisation:

- ✓ **2017:** Re-rating with Government mapping identifying porphyry monzonite intrusion (Cu-Au bearing Cooba Monzonite) contemporaneous with the Cu-Au bearing Northparkes and Cadia Ridgeway porphyry intrusions².
- ✓ **+20km** of prospective strike.
- ✓ **2020:** DevEx’s exploration has identified several porphyry Cu-Au targets.

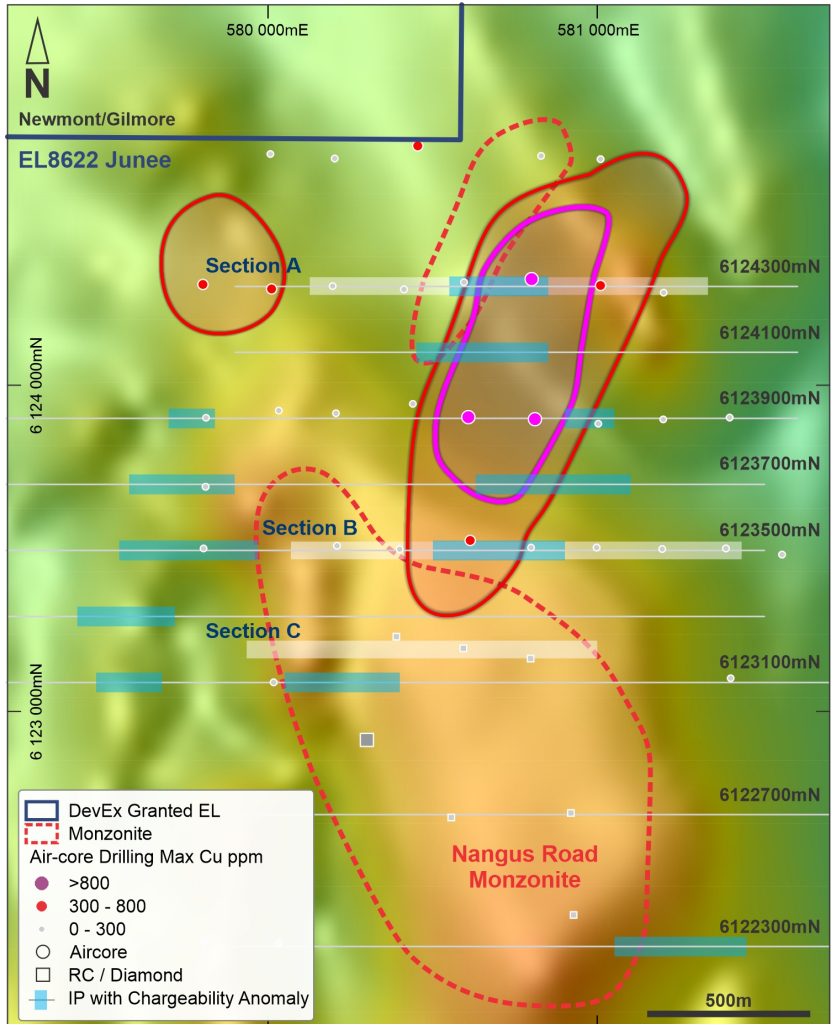
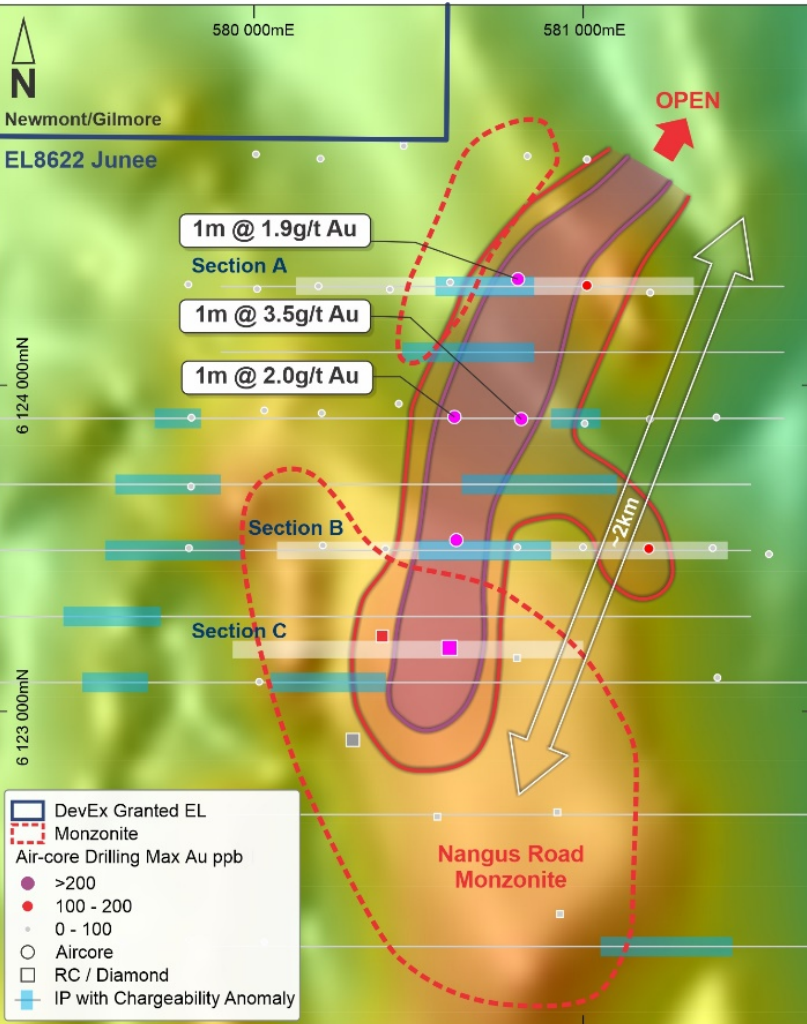
2021 Drilling: Latest exploration has significantly upgraded the potential of the Nangus Road Prospect



See ASX : DEV Announcement 26th July 2021; 3rd March 2020 and 9th February 2021. See Slide 22 for References.

Underlay image of RTP Magnetics.

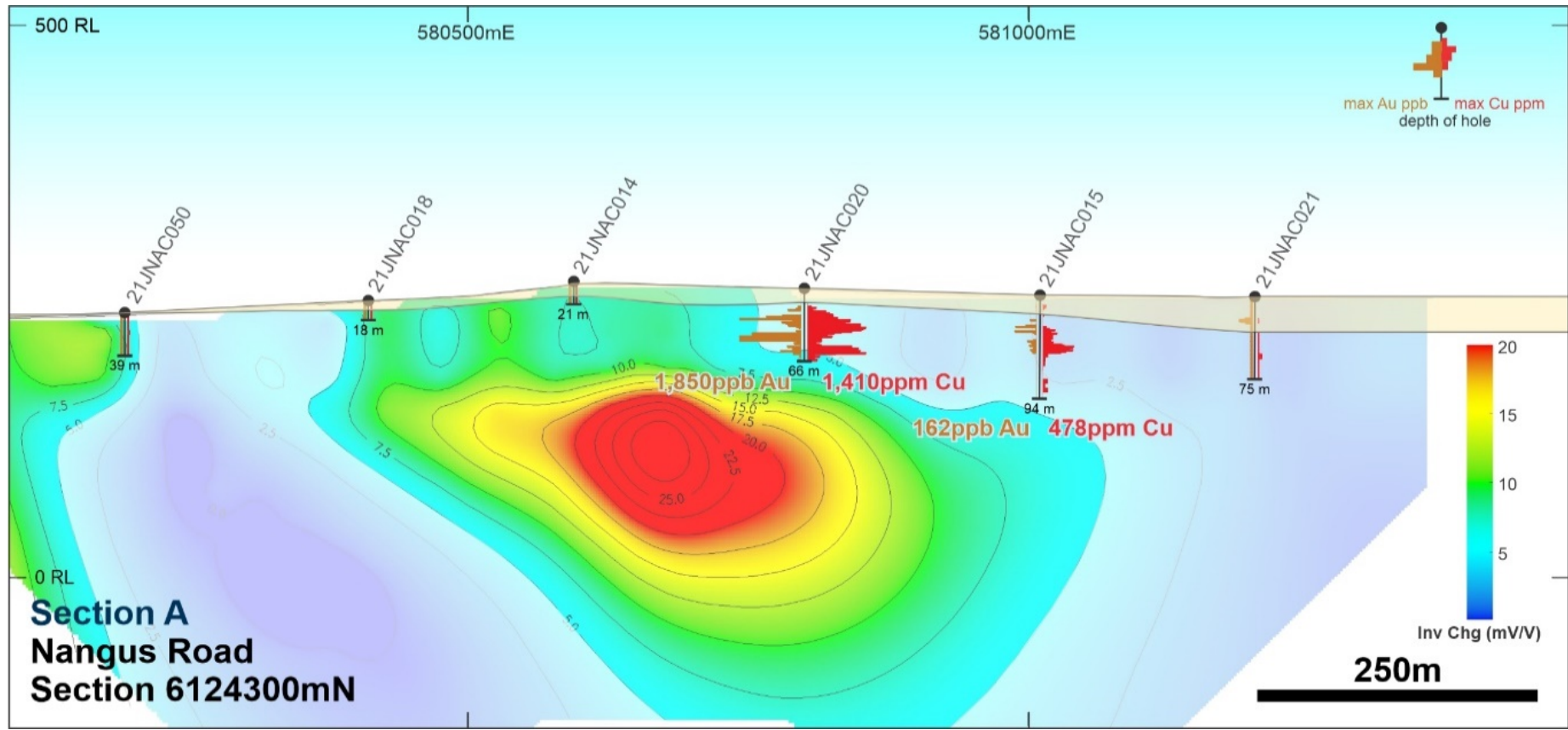
Junee Project: Coincident Cu-Au mineralization overlying IP chargeability anomalies



- Large Porphyry Cu-Au Target identified at Nangus Road Prospect.
- Wide spaced (400m x 200m) drilling defines extensive Cu-Au bedrock mineralization - ~2km length.
 - **Gold grades up to 3.5g/t Au**
- Cu-Au bedrock results are also supported by anomalous pathfinder elements consistent with porphyry Cu-Au system.
- **Close association of IP Chargeability highs with the copper-gold anomaly.**

See ASX : DEV Announcement 26th July 2021; 26th May 2021

Junee Project: Large-scale, Nangus Road target



See ASX : DEV Announcement
26th May 2021

- Wide-spaced reconnaissance AC drilling has intersected coincident copper-gold bedrock mineralisation associated with underlying IP Chargeability anomalies on multiple traverses.
- Results significantly enhance the potential for a underlying porphyry copper-gold system.
- Significant RC/Diamond and Air-core Drilling planned for Q4.



Nabarlek Project

Uranium, Copper-Gold

NORTHERN TERRITORY



High-grade uranium-copper-gold opportunity in a proven uranium system

DevEx well positioned to benefit from an improving uranium market

Major uranium asset in Australia's highest grade uranium province

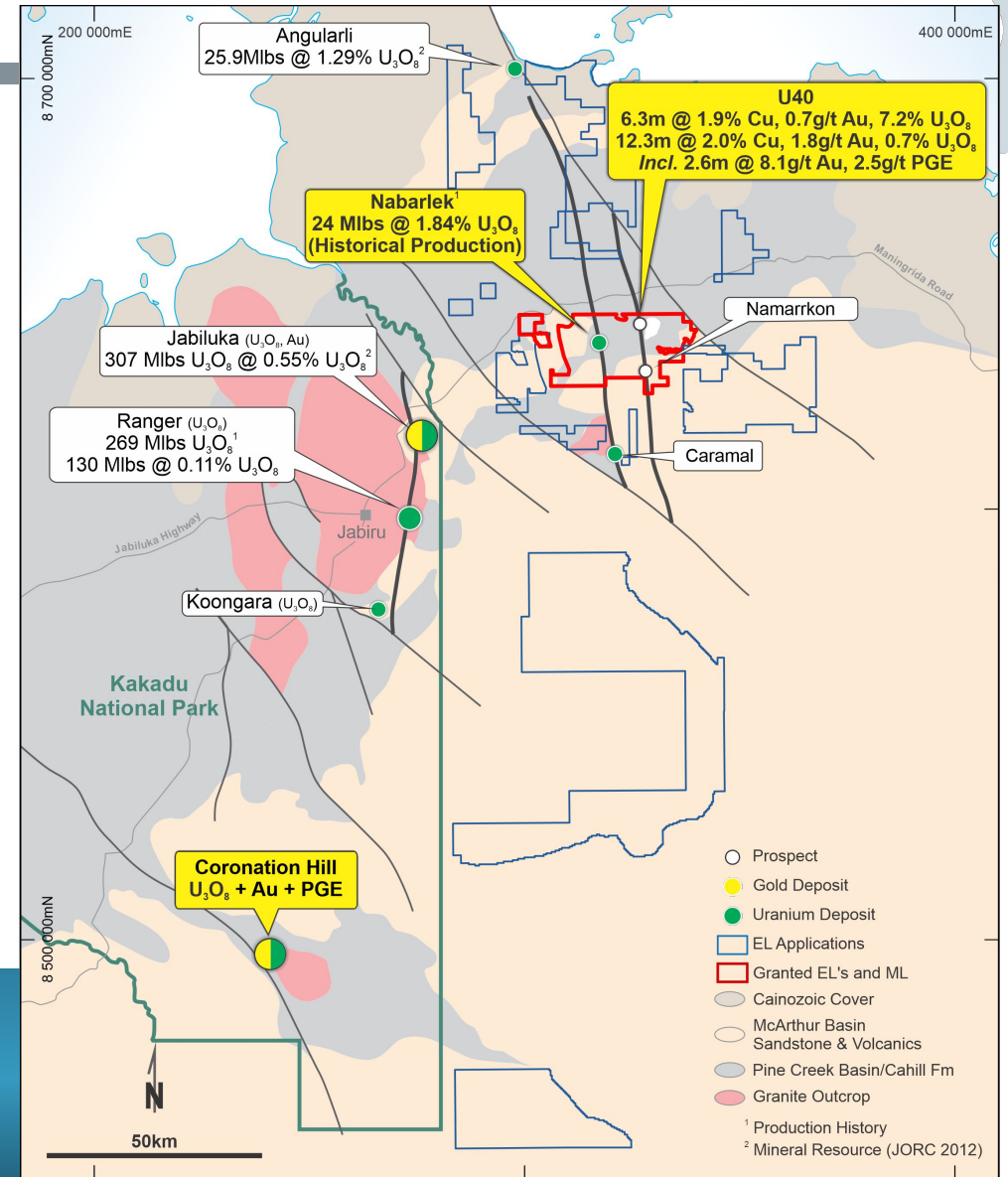
The Alligator Rivers Uranium Province (ARUP)

- +500 Million Pounds U_3O_8 endowment (mined and current Resources^{1,2}).
- Comparable to the Athabasca Basin, Saskatchewan (+1.2Bib U_3O_8).
- Significant potential exists for Gold-Copper and PGE deposits within a proven uranium province.

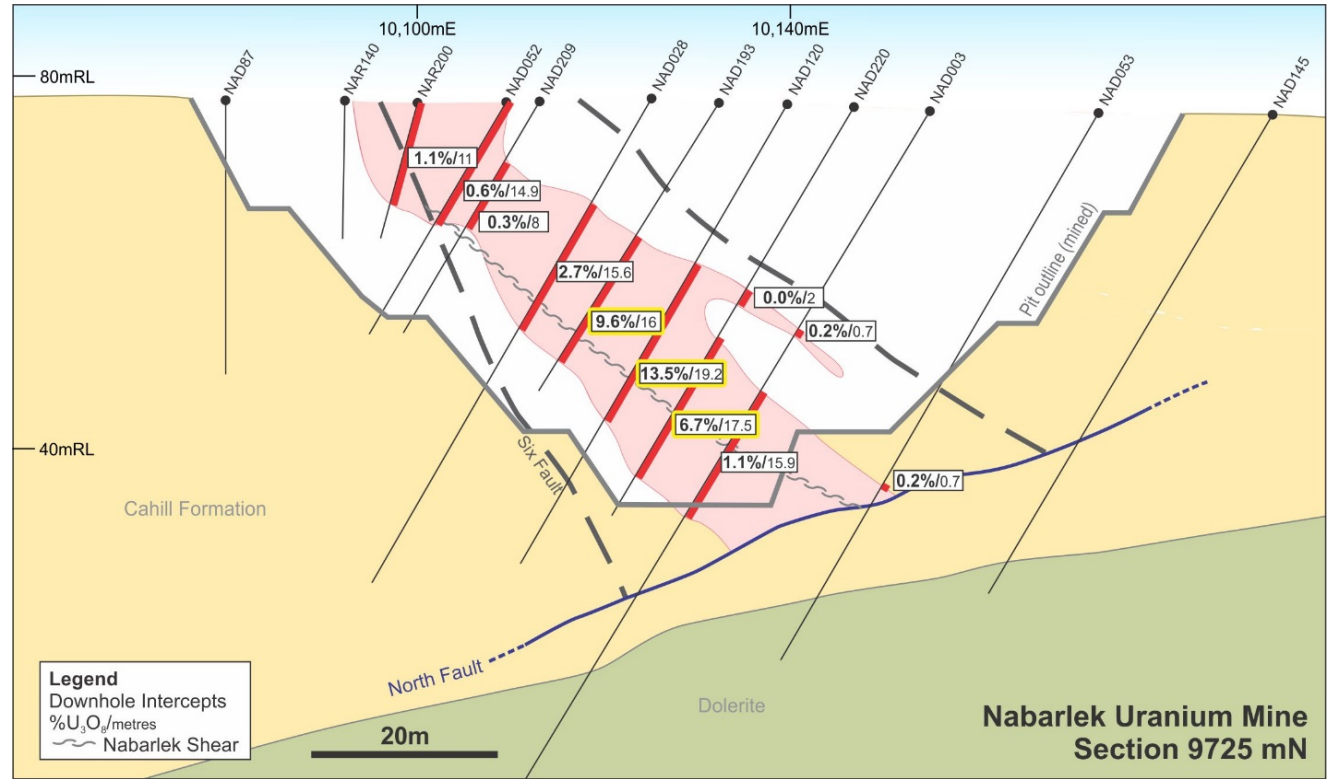
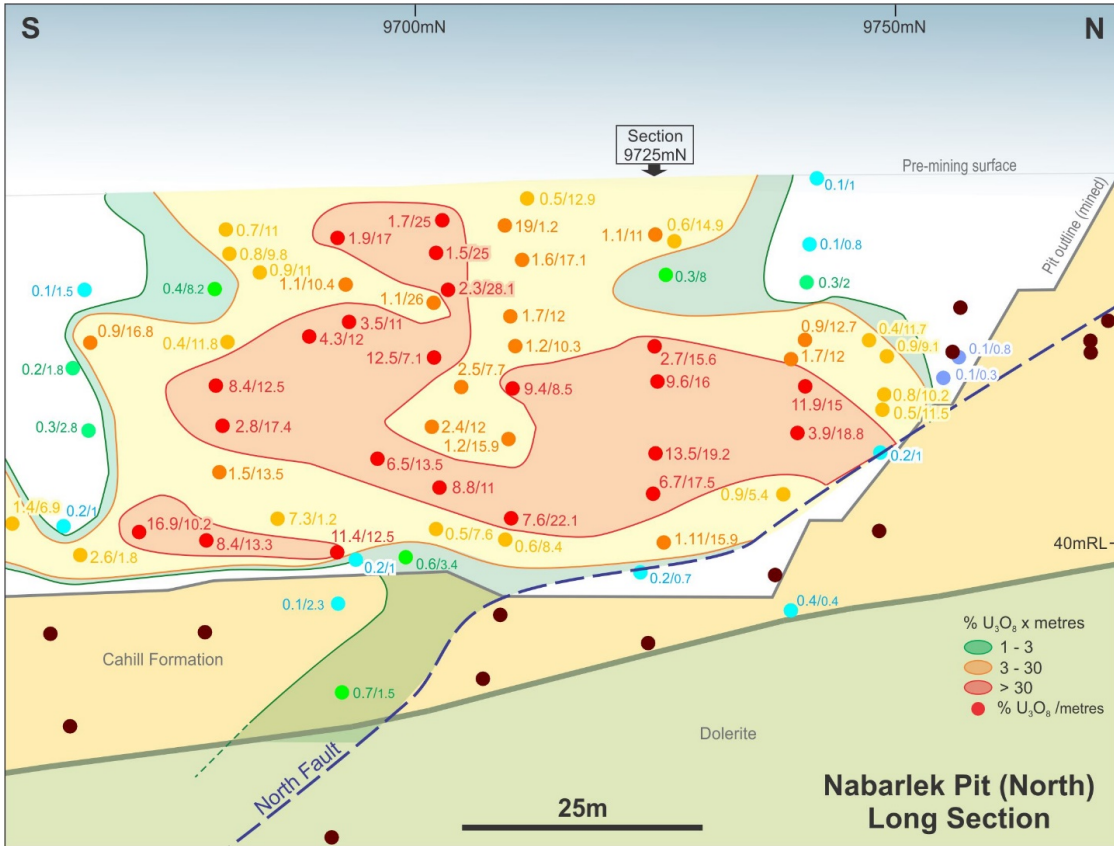
DevEx's Tenure

- Centered on the historical Nabarlek Uranium Mine **24 Milbs @ 1.84% U_3O_8** ¹.
- DevEx holds a dominant ground position of **+4700km²**.
- Since discovery of Nabarlek in the late 1960's a large exploration dataset has been amassed – DevEx is currently compiling.

Project-wide review underway in light of the improving uranium market – a development that continues to bode well for DevEx

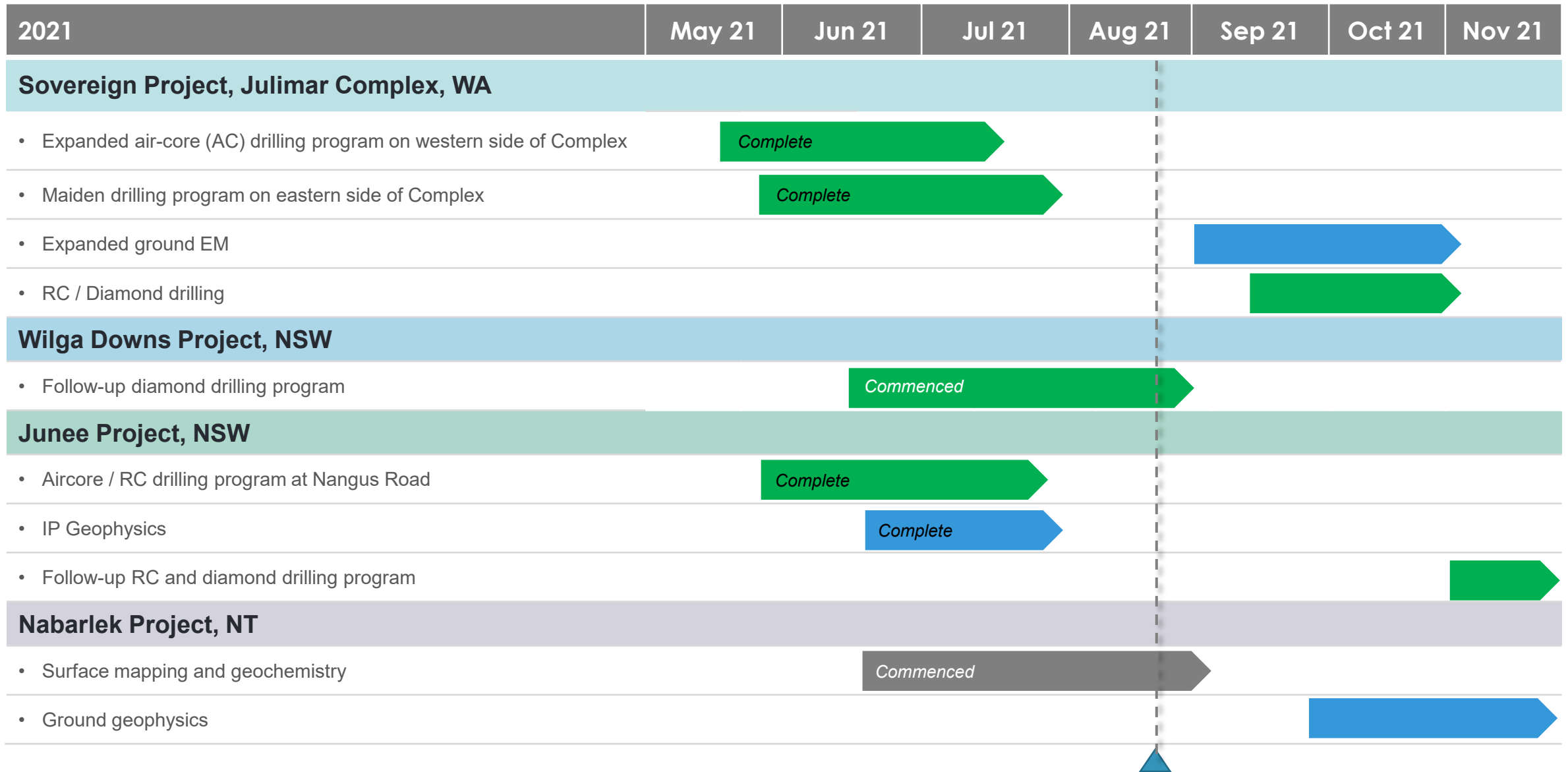


The Nabarlek Deposit : Significant Target - Near-Mine Exploration



- **Nabarlek Uranium Mineralisation** – Significant Concentration of Uranium Mineralisation.
- **Near-Mine Exploration:** DevEx is targeting extensions to the Nabarlek Uranium Deposit.
- **Numerous historical uranium prospects within the granted Tenements** – Review underway, nearing completion.

Next Steps: Exploration timeline



Proposed timeline – dates and activity are indicative and subject to external factors such as regulatory approvals, contractor availability and delays, COVID lockdowns, current farming cycle and access (including weather), and upcoming exploration results.

DevEx Strategy



- 1 Leveraged for Upside** DevEx Projects are unconstrained by historical exploration and any discovery success will have a profound impact.
- 2 Ground Selection** Exploring several prospective targets in three highly endowed regions – Julimar (WA), Lachlan Fold Belt (NSW) and Alligator Rivers Uranium Province (NT).
- 3 Discovery Opportunities** Well funded to accelerate and maintain exploration momentum across all projects.
- 4 Invested Team** Led by an invested team of exploration experts, backed by a growing number of experienced geologists.



Additional References

Julimar Complex & Sovereign Project - Slides 7-9:

1. Chalice Mining Limited (ASX:CHN) ASX announcement “Twelfth High-Grade Zone Defined at Julimar” on 3rd August 2021.
2. Caspin Resources Limited (ASX:CPN) ASX announcement “Broad Sulphide Zones Intersected at Yarabrook Hill” on 24th May 2021.
3. Harrison P. H., 1984. The mineral potential of layered igneous complexes within the Western Gneiss Terrain. In: Professional papers for 1984 of the Geol Surv of W. A. 19. Gov Printing Office, Perth, pp 37–54.
4. Chalice Gold Mines Limited (ASX:CHN) ASX announcement “Major new 6.5km-long EM anomaly identified at Julimar” on 22nd September 2020.

Cobar Gold-Base Metal Projects & Wilga Downs Project – Slides 11-12:

1. Source: David, V. 2006, Cobar Superbasin System Metallogenesis. Wine and Wines Conference.
2. Sandfire Resources Ltd ASX Announcement “Sandfire enters farm-in over Endeavor Base Metal Mine and Exploration Package – Cobar, NSW” on 27th October 2020.

Central Lachlan Fold Belt Region & Junee Project – Slides 13-16:

5. Alkane Resources Ltd (ASX:ALK) ASX Announcement “Discovery of Significant Porphyry Gold-Copper Mineralisation at Boda Prospect within Northern Molong Porphyry Project (NSW)” on 9th September 2019.
1. 2019GSNSW East Riverina Mapping Project - Some Highlights and Implications, Eastlake and Trigg.

Nabarlek Project – Slides 18-19:

1. Production History:
 - McKay, A.D & Mieztis, Y. 2001. Australia’s uranium resources, geology and development of deposits. AGSO – Geoscience Australia, Mineral Resource Report 1.
 - ERA Annual Production Reports 2001 to 2018.
2. Mineral Resource:
 - Vimy Resources (ASX:VMY) Mineral Resource Statement 20 March 2019.
 - Energy Resources of Australia Ltd (ASX:ERA) Annual Statement of Reserves and Resources January 2018.



Contact Details

Level 3, 1292 Hay Street
West Perth WA 6005, Australia

+61 8 6186 9490
+61 8 6186 9495

info@devexresources.com.au
www.devexresources.com.au



<https://twitter.com/DevExResources>
<https://www.linkedin.com/company/devex-resources/>



Investor Relations

Read Corporate
Nicholas Read
+61 8 9388 1474
nicholas@readcorporate.com.au